

Clay Plasters
Color Clay Surfacer
Clay Paint
Clay Dry Building
Timber-Frame Restoration
Interior Insulation
Clay Bricks

Product catalogue

claytec.com



Building with Clay Aesthetics and Perfection



ClayTec products by application



Design Plaster, Surfacers, Paint

pages 5-8



Clay Plaster

pages 9-14



Clay Dry Building

pages 15-20



Timber-Frame Restoration

pages 21-24



Interior Insulation with Clay

pages 25-28



Clay Bricks and Rammed Earth

pages 29-32

Additional Products and Notes

pages 33-34

Japanese Trowels

pages 35-36

Quantity Tables

page 37

Service Teams

page 38

Production and Locations

page 39

For information and application videos on the wide range of ClayTec clay building materials, please visit:

youtube.com/c/CLAYTEC-LEHMBAUSTOFFE

Design Plaster, Surfacer, Paint



Primer YELLOW

Liquid primer with fine grains as a substrate for fine clay topcoat plaster and YOSIMA clay design plaster. YELLOW provides fine-grained grip, reduces and equalizes the absorbency and protects plasterboard and other panelling against moisture from the clay plaster application. **Store and transport in a frost-free environment.**

Item no.	Article description	Delivery form, product features
13.425	YELLOW primer, fine, 10L bucket	30 buckets/EUR pallet liquid, grains of 0.5-1mm, approx. 55m ² depending on substrate (*A)
13.420	YELLOW primer, fine, 5L bucket	56 buckets/EUR pallet liquid, grains of 0.5-1mm, approx. 27.5m ² depending on substrate (*A)

*Please refer to the notes on page 34.



Note: Packaging layout may vary

- Fine grain
- As a substrate for fine clay topcoat plasters

Primer WHITE

Liquid primer without granulation prior to application of ClayFix clay paint and YOSIMA clay surfacer coating materials. Substrates may be clay plasters or others as needed. WHITE ensures that the clay plaster is not dissolved and mixed with the paint. A firm basis is created for subsequent repeat coats. **Store and transport in a frost-free environment.**

Item no.	Article description	Delivery form, product features
13.415	WHITE primer, smooth, 10L bucket	30 buckets/EUR pallet liquid, approx. 60m ² depending on substrate (*A)
13.410	WHITE primer, smooth, 5L bucket	56 buckets/EUR pallet liquid, approx. 30m ² depending on substrate (*A)
13.412	WHITE primer, smooth, 1L bucket	liquid, approx. 6m ² depending on substrate (*A)

*Please refer to the notes on page 34.



Note: Packaging layout may vary

- Smooth
- As a substrate for clay surfacer and clay paint

YOSIMA clay design plaster color system, YOSIMA clay surfacer, and ClayFix clay paint



Red



Yellow



Green



Brown



Black



White

Classic-color palette



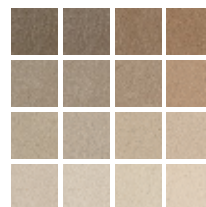
Basic colors/with White



Color palette: Indian Red



Color palette: Natural Umbra



Color palette: Sahara Beige



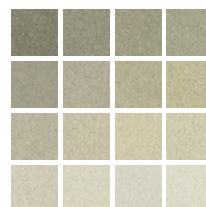
Color palette: Gold Ochre



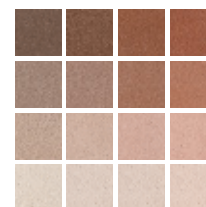
Color palette: Reed Yellow



Color palette: Jade Green



Color palette: Sienna Brown



YOSIMA clay design plaster

Colored clay plaster for interiors. YOSIMA clay design plaster is a colored wall designing material consisting of clay and earth. The clay is both a binder and a colorant, we do not add artificial colors. YOSIMA is offered in 146 earth-color shades, in addition, textural effects can be achieved with six different additives. YOSIMA surfaces are noble, richly colored and brilliant. Their calm and harmonious appearance can be enjoyed each and every day!



Item no.	Article description	Delivery form, product features
40. ...**	YOSIMA Lehm-Designputz	500 kg big bag, 300 L plaster mortar, 150 m ² area at D=0.27 cm Price group 1: Base colors without textural additives (*20) Price group 2: Mixed colors without textural additives (*20) Price group 3: Texture Red Stone/Straw/Japan/Herbs (*20) Price group 4 Texture Pearl (*20) Price group 5 Texture Flash (*20)
		20 kg bucket, 32/EUR pallet, 12 L plaster mortar, 6 m ² area at D=0.2 cm Price group 1: Base colors without textural additives (*20) Price group 2: Mixed colors without textural additives (*20) Price group 3: Texture Red Stone/Straw/Japan/Herbs (*20) Price group 4 Texture Pearl (*20) Price group 5 Texture Flash (*20)
		2.0 kg bag, 1.2 L plaster mortar, 0.6 m ² area at D=0.2 cm Price group 1: Base colors without textural additives (*20)

- Brilliant surface
- 146 earth-color shades
- 7 surface texture variants
- No artificial colors
- No yellowing or fading

*Please refer to the notes on page 34. – **146 color shades, 7 surface textures, see: claytec.de/en/product/designer-plaster-surfacers-paint/yosima-clay-designer-plaster/

YOSIMA clay design plaster textural additives

Item no.	Article description	Delivery form, product features
32.111.ST	Textural additive Straw	126 g bag, straw fibres for a 20 kg bucket (*12)
32.151.JA	Textural additive Japan	124 g bag, sisal fibres for a 20 kg bucket (*12)
32.171.HE	Textural additive Herbs	62 g bag, herb fibres for a 20 kg bucket (*12)
32.121.RS	Textural additive Red Stone	1.672 g bag, granite grains for a 20 kg bucket (*12)
32.141.PE	Textural additive Pearl	314 g bag, pearl grains for a 20 kg bucket (*12)
32.131.FL	Textural additive Flash	314 g bag, glitter grains for a 20 kg bucket (*12)

*Please refer to the notes on page 34.

YOSIMA clay surfacer

Colored clay smooth filler on clay topcoat plaster and other sufficiently smooth surfaces. YOSIMA clay surfacer is a smooth wall finish which provides a modern and classic ambience. It can be sanded, is very smooth and is even water-repellent to a certain extent. Surfaces that are calm and homogeneous as well as lively and cloudy are all possible. When treated with wax, the colors become even deeper and more intense. YOSIMA clay surfacer is offered in 146 earth-colored shades.



Item no.	Article description	Delivery form, product features
50. ...**	YOSIMA clay surfacer	5 kg bucket, 32/EUR pallet, 6 L filler, approx. 6.5 m ² area with 2 coats (*22)
		1.0 kg bag, 1.2 L filler approx. 1.3 m ² area with 2 coats

- Smooth, refined, elegant
- Matt or glossy possible
- 146 YOSIMA color shades

*Please refer to the notes on page 34. – **146 color shades see: claytec.de/en/product/designer-plaster-surfacers-paint/yosima-clay-surfacers/

ClayFix clay paint

Clay paints with and without grains for smooth interior surfaces. ClayFix clay paint: clay finishing made easy. Available in 146 earth color shades that match the YOSIMA color palette (usually brighter). We offer fine grain and coarse grain as structural additives. The paint is ecologically friendly, free of solvents and breathable. The dry material is simply mixed with water. Apply to all paintable surfaces in a cross stroke with a fine brush, brush or tassel. ClayFix clay paint fine grain and coarse grain can also be sprayed.



Item no.	Article description	Delivery form, product features
19. ...**	ClayFix clay paint, 10kg	32 buckets/EUR pallet, Coverage: approx. 60m ² with one coat over WHITE primer; two coats may be applied depending on the substrate (*22)
	ClayFix clay paint, 1.5kg	1.5kg small packet (bag) Enough for one coat on approx. 9m ² , two coats on approx. 7.5m ² , depending on the surface

*Please refer to the notes on page 34. – **146 color shades, 3 surface textures, for article numbers see the ClayFix color palette: claytec.de/en/product/designer-plaster-surfacers-paint/clayfix-clay-paint/

- Affordable, simple and quick
- 146 color shade
- Smooth, fine-grain or coarse-grain

ClayFix Clay Paint structural additives for single addition

Item no.	Article description	Delivery form, product features
32.200.FK	structural additives fine-grain	3.16kg bag, marble sand 0-0.5mm for a 10kg bucket (*12)
32.210.GK	structural additives coarse-grain	3.16kg bag, marble sand 0.5-1.0mm for a 10kg bucket (*12)

*Please refer to the notes on page 34.

ClayTec clay paint and ClayTec clay roll-on plaster ready-to-use

Clay paints with and without grain for clay plasters and many other interior surfaces. ClayTec clay paint 13.005 and clay brush and roll-on plaster 13.105 are ready for use and can also be applied by roller. Clay paint 13.005 can also be applied with airless spray equipment. The paints are free from solvents and preservatives, open to diffusion and hard-wearing. Preparatory priming is usually not needed.

Store and transport in a frost-free environment.



Note: Packaging layout may vary

Item no.	Article description	Delivery form, product features
13.005	ClayTec clay paint pure white 10L, ready-to-use	40 buckets/EUR pallet 15kg/bucket, without grain - Coverage: approx. 33m ² on smooth, slightly absorbent surfaces, approx. 18m ² on rough, highly absorbent surfaces (*22)
13.105	ClayTec clay roll-on plaster pure white 10L, ready-to-use	40 buckets/EUR pallet 15kg/bucket, with grain - Coverage: approx. 28m ² on smooth, slightly absorbent surfaces, approx. 15m ² on rough, highly absorbent surfaces (*22)

*Please refer to the notes on page 34.

- Smooth or with grain
- Breathable
- Hard-wearing
- Application with a roller
- Airless application (clay paint)

Clay plasters



Primer RED

Liquid primer with coarse grain size before application of coarse clay plaster mortars. RED provides grip and plaster adhesion on smooth and/or poorly absorbent substrates such as high-insulation bricks, KS elements, concrete, lime and gypsum plasters, old dispersion paints (solid but porous), old synthetic resin plasters and others. **Store and transport in a frost-free environment.**



Note: Packaging layout may vary

Item no.	Article description	Delivery form, product features
13.435	RED primer, coarse, 10L bucket	30 buckets/EUR pallet, liquid, particle size 0.5–2.0mm, approx. 25m ² depending on the substrate (*A)
13.430	RED primer, coarse, 5L bucket	56 buckets/EUR pallet, liquid, particle size 0.5–2.0mm, approx. 12.5m ² depending on the substrate (*A)

*Please refer to the notes on page 34.

- Coarse grain
- As a substrate for coarse clay plaster

Clay undercoat plaster with straw

Single or multilayer undercoat plaster for interior application. For 40 years now clay undercoat plaster with straw has been the classic for applying thick layers, e.g. on rough masonry, for wall panel heating or for restoration work in historical buildings. Up to 35 mm can be applied in a single pass. The material is highly workable, it sticks overhead, and is suitable for gap filling and much more. Clay undercoat plaster with straw is also a substrate for all coarse and fine ClayTec clay topcoat plasters. Naturally-moist mortar is particularly resource-saving. Dry mortar never expires and can also be used with plastering machines.



Item no.	Article description	Delivery form, product features
05.001	Clay basecoat plaster with straw, NATURALLY MOIST 1.0t	DIN 18947, 1.0t big bag, sand 0-2mm, straw 30mm, 600L clay mortar, 40m ² area with D=1.5cm (*B)
05.201	Clay basecoat plaster with straw, NATURALLY MOIST SMALL	DIN 18947, 0.5t big bag, sand 0-2mm, straw 30mm, 300L clay mortar, 20m ² area with D=1.5cm (*B)
05.002	Clay basecoat plaster with straw, DRY in big bag	DIN 18947, 1.0t big bag, sand 0-2mm, straw 30mm, 625L clay mortar, 42m ² area with D=1.5cm (*2I)
10.110	Clay basecoat plaster with straw, Bagged goods	DIN 18947, 25kg bag, 48/EUR pallet, sand 0-2mm, straw 30mm, 16.7L clay mortar, 1.1m ² area with D=1.5cm (*C)

*Please refer to the notes on page 34.

- The clay basecoat classic
- Multi-functional
- Easiest to work with

Clay plaster Mineral 20

Single- or multi-layered basecoat and topcoat plaster for indoor use. Mineral clay plaster is a basecoat and topcoat plaster all in one. It contains angular fractured sand to ensure strength. After application, the mortar contracts quite quickly and can be worked with again after a short period. If used as a basecoat plaster, it is suitable for all coarse and fine ClayTec clay topcoat plasters, e.g. YOSIMA clay design plaster. If used as a rough or even smooth topcoat with a mineral, straw-free surface texture, it can be painted with the ClayFix clay paint system.



Item no.	Article description	Delivery form, product features
05.030	Mineral clay plaster 20 NATURALLY MOIST 1.0t	DIN 18947, 1.0t big bag, sand 0-2.8mm, 500L clay mortar, 50m ² area with D=1.0cm (*B)
05.230	Mineral clay plaster 20 NATURALLY MOIST SMALL	DIN 18947, 0.5t big bag, sand 0-2.8mm, 250L clay mortar, 25m ² area with D=1.0cm (*B)
05.032	Mineral clay plaster 20 DRY	DIN 18947, 1.0t big bag, sand 0-2.8mm, 540L clay mortar, 54m ² area with D=1.0cm (*2I)
10.130	Mineral clay plaster 20 Bagged goods	25kg bag, 48/EUR pallet, sand 0-2.8mm, 13.5L clay mortar, 1,35m ² area with D=1.0cm (*C)

*Please refer to the notes on page 34.

- Basecoat and topcoat plaster
- No organic components
- Dries quickly

Clay plaster SanReMo

Single or multi-layer basecoat and topcoat for interior use, particularly suitable for the variety of substrates used during renovation, refurbishment and modernisation. Clay plaster SanReMo is a mortar designed for moderately thick application. It can be applied very thinly at 3 mm or quite thickly at 10 mm. The mortar also tolerates non-uniformly absorbent or only poorly absorbent plaster substrates. This is helped by the porous water-absorbent pumice component as well as the fine miscanthus fiber component. The fiber is not visible on the surface. As a basecoat plaster, clay plaster SanReMo is suitable for all fine ClayTec clay topcoat plasters, e.g. YOSIMA clay design plaster. It can also be easily painted with the ClayFix clay paint system.



Item no.	Article description	Delivery form, product features
05.810	Clay Plaster SanReMo DRY in big bag	DIN 18947, 800kg big bag, sand/pumice 0-1.5mm, 544L clay mortar, 91m ² area with D=0.6cm (*2I)
10.810	Clay Plaster SanReMo DRY in big bag	DIN 18947, 2kg bag, 48/EUR pallet, sand/pumice 0-1.5mm, 17L clay mortar, 2,8m ² area with D=0.6cm (*C)

*Please refer to the notes on page 34.

- Single coat on any substrate
- Basecoat and topcoat plaster, 6 mm thickness
- Thick and thin coats can also be used
- Ideal for refurbishment, renovation, modernization

Clay topcoat plaster coarse with straw

One-coat topcoat plaster for indoor use. On clay undercoat plaster, sufficiently level masonry and other solid materials. The thickness of application is between 6 mm and 10 mm. Clay topcoat plaster with straw is the mortar for every surface texture, from rustic to smooth. The short-cut straw serves not only a decorative purpose on the surface, it also makes the plaster smooth and easily workable even for novices. The plaster is painted with ClayFix clay paints. Earth-moist mortar is exceptionally resource-saving; the dry mortar keeps indefinitely and can also be used with plastering machines.



Clay topcoat plaster coarse with straw, shown with Clayfix clay paint WE0

Item no.	Article description	Delivery form, product features
05.010	Clay topcoat plaster coarse with straw, NATURALLY MOIST 1.0t	DIN 18947, 1.0t big bag, sand 0-2mm, straw 10 mm, 600L clay mortar, 60m ² area with D=1.0cm (*B)
05.210	Clay topcoat plaster coarse with straw, NATURALLY MOIST SMALL	DIN 18947, 0.5t big bag, sand 0-2mm, straw 10 mm, 300L clay mortar, 30m ² area with D=1.0cm (*B)
05.012	Clay topcoat plaster coarse with straw, DRY in big bag	DIN 18947, 1.0t big bag, sand 0-2mm, straw 10 mm, 625L clay mortar, 63m ² area with D=1.0cm (*21)
10.112	Clay topcoat plaster coarse with straw, Bagged goods	DIN 18947, 25kg bag, 48/EUR pallet, sand 0-2mm, straw 10mm, 16.7L clay mortar, 1.7m ² area with D=1.0cm (*C)

- The classic clay topcoat
- Rustic straw surface

*Please refer to the notes on page 34.

Clay color plaster coarse

Single-layered, colored topcoat plaster for indoors. The material is typically applied at a thickness of 6 mm. This also makes it suitable for substrates that are too uneven for the application of a thin clay layer finish. The application also allows for the creation of coarse-structured surfaces. Coarse clay color plaster requires no further coating or painting. This not only saves costs: the clay surface in rooms can also be experienced in a pure and direct way.



Item no.	Article description	Delivery form, product features
10.210	Lehm-Farbputz grob HELL, Bagged goods	25kg bags, 48/pallet, sand 0-2, straw 10mm, yield approx. 15L - 17L plaster mortar**, approx. 2.7m ² area with D= 0.6cm (*C)
10.220	Lehm-Farbputz grob GRAU, Bagged goods	25kg bags, 48/pallet, sand 0-2, straw 10mm, yield approx. 15L - 17L plaster mortar**, approx. 2.7m ² area with D= 0.6cm (*C)
10.230	Lehm-Farbputz grob ROT, Bagged goods	25kg bags, 48/pallet, sand 0-2, straw 10mm, yield approx. 15L - 17L plaster mortar**, approx. 2.7m ² area with D= 0.6cm (*C)
10.240	Lehm-Farbputz grob GRÜN, Bagged goods	25kg bags, 48/pallet, sand 0-2, straw 10mm, yield approx. 15L - 17L plaster mortar**, approx. 2.7m ² area with D= 0.6cm (*C)
10.250	Lehm-Farbputz grob GELB, Bagged goods	25kg bags, 48/pallet, sand 0-2, straw 10mm, yield approx. 15L - 17L plaster mortar**, approx. 2.7m ² area with D= 0.6cm (*C)
10.260	Lehm-Farbputz grob BEIGE, Bagged goods	25kg bags, 48/pallet, sand 0-2, straw 10mm, yield approx. 15L - 17L plaster mortar**, approx. 2.7m ² area with D= 0.6cm (*C)

- Single-coat clay plaster requiring no further coating
- For creative colored plaster surfaces
- Available in 6 selected shades

*Please refer to the notes on page 34. **may vary slightly depending on the shade.

Primer YELLOW

Liquid primer with fine grains for application underneath fine clay topcoat plaster and YOSIMA clay design plaster. YELLOW provides fine-grained grip, reduces and equalizes the absorbency and protects plasterboard and other panelling against moisture from the clay plaster application. Store and transport in a frost-free environment.



Note: Packaging layout may vary

Item no.	Article description	Delivery form, product features
13.425	YELLOW primer, fine, 10L bucket	30 buckets/EUR pallet liquid, grains of 0.5-1mm, approx. 55m ² depending on substrate (*A)
13.420	YELLOW primer, fine, 5L bucket	56 buckets/EUR pallet liquid, grains of 0.5-1mm, approx. 27.5m ² depending on substrate (*A)

*Please refer to the notes on page 34.

- Fine grain
- As a substrate for fine clay plasters

Clay topcoat fine 06

ClayTec clay topcoat fine 06 has all the advantages of clay mortars that are reinforced with long fibers. It is easy to prepare and very easy to apply without fiber concentrations in the mixer and during application. The clay topcoat fine 06 is very pasty and smooth. Its fine grain gradation up to 0.6 mm makes it easy to drag out the material very thin and work out the surface very fine. Clay topcoat fine 06 is a mortar for thin plasters 2-3 mm thick. Available also in 800 kg big-bag with large reach.



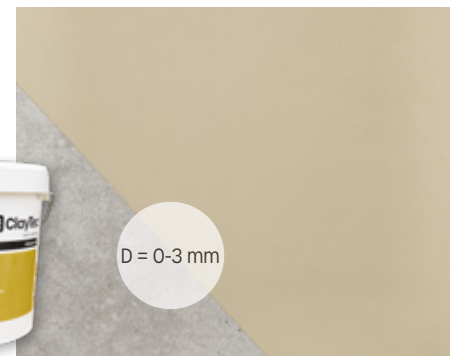
Item no.	Article description	Delivery form, product features
05.113	Clay topcoat FINE 06 DRY in big bag	DIN 18947, 800 kg big bag, sand 0-0.6 mm, 544L clay mortar, 182m ² area at D=0.3 cm (*21)
10.113	Clay topcoat FINE 06 Bagged goods	DIN 18947, 25kg bag, 48/EUR pallet, sand 0-0.6 mm, 17L clay mortar, 5.7m ² area at D=0.3 cm (*C)

*Please refer to the notes on page 34.

- The fine clay plaster
- Finest grains and fibers
- Simple and quick to apply

Clay filling and smoothing putty

Clay filling and smoothing putty for subsequent coating on ClayTec clay topcoat fine and other sufficiently smooth substrates such as plaster surfaces, plasterboards, gypsum fiberboards etc., or for YOSIMA color clay surfacer. The clay filling and smoothing putty allows you to smooth out imperfections and holes, and is also suitable for use as an overlay for the entire surface. Clay filling and smoothing putty is a multi-purpose tool with a wide range of possible applications. It is available in natural brown and natural bright. Natural light is recommended as a substrate for light-colored finishes.



Item no.	Article description	Delivery form, product features
13.530	Clay filling and smoothing putty, natural brown	10 kg/buckets, 7,5L putty, approx. 7.5m ² area at D=1 mm, 33 Eimer/EUR pallet (*22)
13.531	Clay filling and smoothing putty, natural bright	10 kg/buckets, 7,5L putty, approx. 7.5m ² area at D=1 mm, 33 Eimer/EUR pallet (*22)

*Please refer to the notes on page 34.

- For filling and flattening out
- For eco-friendly drywall construction
- In natural brown or natural bright
- Good filling properties, long working time

Reed matting St 70

Lath on mixed substrates and wood. In the 1980s, ClayTec rediscovered and developed this fabric made of reeds and wire with 70 stems/m. The stalk distances are a perfect match for the grain of coarse clay plaster mortar.

The product helps the plaster stick to wooden beams and provides strength to unstable walls and thick overlayers. 34.001 on 10.0 m rolls is our standard product. 34.002 on 5.0 m rolls is characterized by particularly strong stalks for demanding applications (e.g. planking) and stable binding even with smaller cuts.



Item no.	Article description	Delivery form, product features
34.001	Reed matting St70, roll B=1.8 m	70 stems per m, L=10m, 18 m ² (*N)
34.002	Reed matting St70, roll B=2m	70 stems per m, L=5m, 10 m ² (*N)

- Natural building material as a lath
- Technically ideal for clay plasters
- Many uses

*Please refer to the notes on page 34.

Reinforcement mesh

Surface reinforcement for clay adhesion and reinforcement mortar and all clay plasters. The ClayTec hessian mesh is a canvas mesh made of jute yarn, finished with polysaccharide (starch). Hessian mesh is the classic among ecological plaster reinforcement meshes.

ClayTec glass mesh 60 is a gauze made of glass fiber yarn/roving, enhanced with polymer finishing. It is tensile, very fine, and particularly easy to handle.



Item no.	Article description	Delivery form, product features
35.002	Hessian mesh, roll B=1m	4.5 mm mesh, L=50 m, 50 m ² (*20)
35.010	Glass mesh 60, roll B=1m, L=100m	approx. 60 g/m ² , 5.5 mm mesh, L=100 m, 100 m ² (*20)
35.013	Glass mesh 60, roll B=1m, L=35 m	approx. 60 g/m ² , 5.5 mm mesh, L=35 m, 35 m ² (*20)

- Jute: Traditional und eco-friendly
- Glas: Sturdy standard product

*Please refer to the notes on page 34.

Clay joint-filler

Filler material for joints between clay and wooden building elements, such as door linings and skirting boards, for dowel holes, shrinkage gaps, and cracks in wood. Clay joint-filler is the ecological alternative to plastic filling compounds. The dry material is mixed with water, transferred to the refillable ClayTec cartridge and applied using a cartridge applicator gun. Residual quantities can be stored indefinitely.

The natural brown shade is suitable for natural-colored clay interior plaster surfaces. The natural pale shade is suitable for white and light-colored clay and lime interior plaster surfaces.



Item no.	Article description	Delivery form, product features
13.520	Clay joint fillers, natural BROWN	1.5kg bag, dry, approx. 2.5L caulking mass
13.521	Clay joint fillers, natural LIGHT	1.5kg bag, dry, approx. 2.5L caulking mass
182/595	ClayTec cartridge empty	with nozzle and funnel/ 310 ml

- Ecological joint-filler
- For all clay plaster joints
- Rapid and proven
- Durable

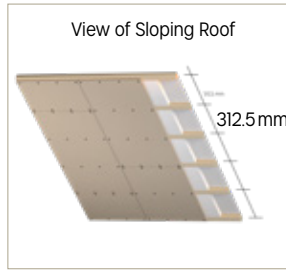
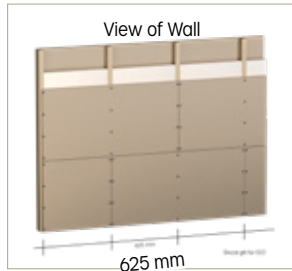
Clay Dry Building



ClayTec clayboard D22 solar

ClayTec clayboard D22 solar is manufactured using a 100 percent CO₂-neutral process. Drying is carried out exclusively with solar energy, with the solar heat fed directly into the drying process. As a result, production follows the rhythm of the seasons.

The drywall panel, made of clay and miscanthus fibers, is highly dimensionally stable, sturdy, and easy to handle. It is used for cladding wooden and metal stud frames in interior walls, facing shells, ceilings, and roof surfaces. The ClayTec clayboard D22 solar combines drywall panel and clay plaster in one. It provides heat protection in summer and helps balance the indoor climate. It serves as the basis for many ClayTec clay surface coatings, offering solutions for every customer requirement. **Clay adhesive and reinforcing mortar is suitable for the reinforcing layer of all drywall panels.**



- Dimensionally stable
- Form-stable
- Easy to handle
- Solar dried
- 100 % CO₂-neutral production

Item no.	Article description	Delivery form, product features
09100	ClayTec clayboard D22 solar, D=22 mm, solar	50 boards/EUR pallet, each board 0.625 x 1.25 m, 0.78 m ² /board (*D)

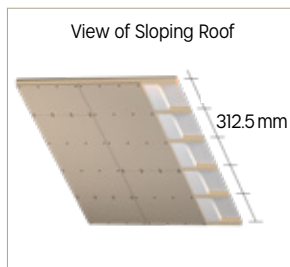
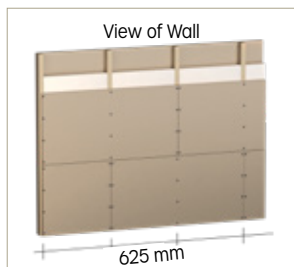
*Please refer to the notes on page 34.



The pilot project for developing the first purely solar-powered drying process for producing clay building boards was funded by the German Federal Environmental Foundation under project number Az 35520/01.

Clayboard heavy D22 / D16

Drywall board made of clay for cladding of wood and metal stud frames in interior walls, cladding systems, ceilings and roof surfaces. The clayboard heavy brings lots of clay into the house, with all the positive effects for the indoor climate, especially with regard to air humidity and heat protection. It must be cut with the hand-held circular saw. The Clayboard heavy D22 allows for a wide drywall stud spacing of 625 mm on walls.



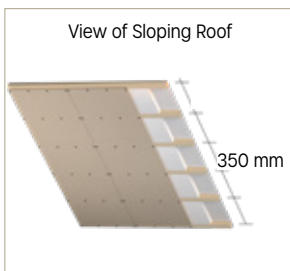
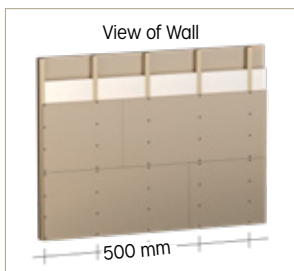
Item no.	Article description	Delivery form, product features
09.014	Clayboard heavy D22, D=22 mm	40 boards/EUR pallet, each board 0.625×1.25 m 0.78 m ² /board (*G)
09.015	Clayboard heavy D16, D=16 mm	60 boards/EUR pallet, each board 0.625×1.25 m 0.78 m ² /board (*G)

- Pure clay mass
- Heavy-weight
- Fire behavior A2, A2 - s1 d0

*Please refer to the notes on page 34.

ClayTec HFA N+F D20

Wood fiberboard (HFA) for cladding of wood and metal stud frames in interior, cladding systems, ceiling and roof surfaces. ClayTec HFA N+F are light and breathable. The small format and the tongue-and-groove ensure best workability, even joints are possible in the field. It is very reasonably priced, making drywall affordable for everyone!



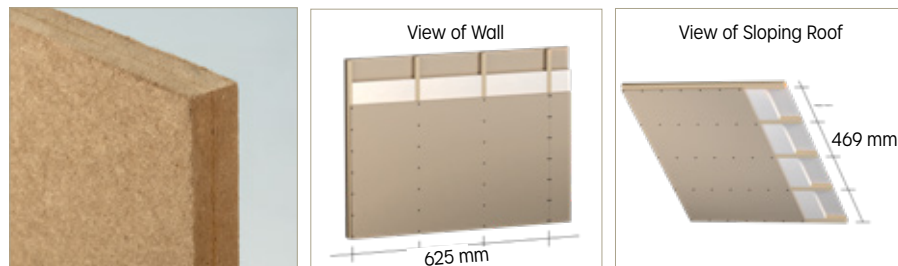
Item no.	Article description	Delivery form, product features
09.221	ClayTec HFA N+F, D=20 mm	112 boards/EUR pallet, each board 0.60×1.35 m, effective measure 0.78 m ² /Platte, butt groove and tongue (*H)

- Ecological wood fiberboard (HFA)
- Lightweight
- Joints possible in the field
- Small format is ideal for Do-It-Yourself builders

*Please refer to the notes on page 34.

ClayTec HFA maxi

Wood fiberboard (HFA) for cladding of wood and metal stud frames in interior walls, cladding systems, ceiling and roof surfaces. ClayTec HFA maxi boards are light and breathable. The large format of 1.25 x 1.875 m ensures efficient working, it is designed to fit the 625 mm drywall grid. Thanks to the reasonably priced large building boards the ecological drywall is affordable for everyone!



Item no.	Article description	Delivery form, product features
09.226	ClayTec HFA maxi, D=25mm	45 boards/EUR pallet, each board 1.25x1.875m 2.34m ² /board, blunt edges (*)

*Please refer to the notes on page 34.

- Ecological wood fibreboard (HFA)
- Lightweight
- Large format for professionals

ClayTec clay dry plasterboard

Dry plaster board made of clay and reed for covering wood and wood-based materials as well as old plaster and solid building materials. The ClayTec clay dry plaster board is used to improve the room climate in dry construction without moisture penetration during installation. It is the result of craftsman's experience and has been on the market for 25 years. Its handy format makes it easy to work with. Clay adhesive and reinforcement mortar is suitable for gluing and reinforcing.



Item no.	Article description	Delivery form, product features
09.010	Clay dry plasterboard, D=16mm	120 boards/EUR pallet, each board 0.625x0.625m, 0.39m ² /boards (*F)

*Please refer to the notes on page 34.

- Bioconstructive dry plaster
- Best indoor climate
- Fast and with no moisture upon installation

ClayTec HFA thin

Thin wood fiberboard (HFA) as plaster base on wood and wood materials. The boards can be screwed or stapled. In this way, a secure substrate for the reinforcing layer of clay adhesive and reinforcing mortar and the subsequent clay finish is created very easily on wood.



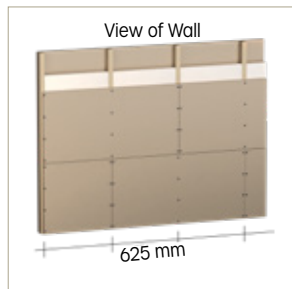
Item no.	Article description	Delivery form, product features
09.009	ClayTec HFA thin, D= 8 mm	276 boards/EUR pallet, each board 1.20×0.60 m 0.72 m ² /board, blunt edges (*I)

*Please refer to the notes on page 34.

- Ecological wood fiberboard (HFA)
- Clay plaster base layer in wood construction
- Thin and reasonably priced

Clayboard light D22 / D14

Clay drywall board for cladding wood and metal stud frames in interior walls, cladding systems, ceilings, and roof surfaces. The lightweight clayboard brings a large amount of clay into the building, with all the positive effects for the indoor climate, especially in thermal terms. It can be cut with a hand-held circular saw. Clayboard D22 allows a wide drywall substructure grid of 625 mm for wall applications.



Item no.	Article description	Delivery form, product features
09.016	Clayboard light, D= 22 mm	64 boards/EUR pallet, each board 1.25×1.00 m 1.25 m ² /board (*G)
09.017	Clayboard light, D= 14 mm	80 boards/EUR pallet, each board 1.25×1.00 m 1.25 m ² /board (*G)

*Please refer to the notes on page 34.

- Pleasantly lightweight and easy to handle
- Dimensionally stable

Clay adhesive and reinforcing mortar

Clay adhesive and reinforcing mortar for reinforcement layers on clayboards, wood fibre topboards and interior insulation panels. Clay adhesive and reinforcement mortar is made from clay and cellulose ingredients. This guarantees maximum workability, even when it is applied thinly. With a compressive strength of 3.9 MPa that sets new standards for clay mortar, and an adhesive strength of 0.85 MPa, clay adhesive and reinforcing mortar guarantees the solidity of the entire structure. It provides a substrate for ClayTec clay finishing plasters (fine) and YOSIMA clay design plaster. With good preparation it can also be applied using the ClayFix clay paint system and ClayTec clay paint ready-to-use.



Item no.	Article description	Delivery form, product features
13.555	Clay adhesive and reinforcing mortar, bagged goods	COMPRESSIVE STRENGTH 3.9N/mm ² , ADHESIVE STRENGTH 0.85N/mm ² , 25 kg bag, 48/EUR pallet, 17 L mortar, 5.7 m ² area (*C)

*Please refer to the notes on page 34.

- Powerful adhesion properties, pressure-resistant
- Supple
- Remains workable long after application

Glass mesh 112

Surface reinforcement for clay adhesive and reinforcing mortar in drywall construction. ClayTec glass mesh is a gauze made of glass fiber yarn/roving, enhanced with polymer finishing for scrim. It is stable, tensile-resistant, and particularly easy to handle.



Item no.	Article description	Delivery form, product features
35.011	Glass mesh 112, roll B=1m, L=100m	approx. 112g/m ² , 5.0 x 5.5 mm mesh, L= 100m ² (*20)
35.014	Glass mesh 112, roll B=1m, L=35m	approx. 112g/m ² , 5.0 x 5.5 mm mesh, L= 35m ² (*20)

*Please refer to the notes on page 34.

- For reliable drywall construction
- Open-mesh and high tensile strength
- Easy to apply

ClayTec Drywall sealing tape

Insulating strip made of wool felt. The drywall sealing tape is used at the edges of drywall constructions where they meet adjoining walls, floors, and ceilings. It is available in widths of 50 mm and 75 mm, making it suitable for common timber stud cross-sections and metal profile heights. It reduces sound transmission between rooms and compensates for any surface irregularities of solid building components.



Item no.	Article description	Delivery form, product features
35.071	ClayTec Drywall Sealing Tape B=50 mm, L= 25 m	Connection seal made of wool felt, density approx. 0.35 kg/m ²
35.072	ClayTec Drywall Sealing Tape B=75 mm, L= 25 m	Connection seal made of wool felt, density approx. 0.35 kg/m ²

- Sealing tape for use between drywall substructure elements and adjoining building components
- Closes connection joints and reduces sound transmission

Transport aid and clay building board screws

Item no.	Article description	Delivery form, product features
35.120	ClayTec clay building board screws, box of 100 pcs.	5x50 mm, washer fixed (**8)
35.115	LEMIX clay board screws, box of 100 pcs.	5x60 mm, washer fixed (**8)
182/400	Transport aid, for transportation clayboards, in the warehouse and on the building site	ca. 80 x 63 cm, aluminum

*Also available 35.125 large box with 1000 pcs. **Please refer to the notes on page 34.



Timber-Frame Restoration



Larch triangular battens and oak triangular battens

Larch- and oak wood battens for connecting between masonry and timber-frame beams. The cross section is sufficiently flexible and adaptable also for old and irregular beams. The height corresponds exactly to the thickness of the gap closing clay mortar joint.



Item no.	Article description	Delivery form, product features
00.050	Larch triangular battens	12 batten bundle, H=10 mm, L=2 m, 1 bundle for each pallet of clay bricks. (*K)
00.051	Oak triangular battens	12 batten bundle, H=12 mm, L=2 m and 1 m, 1 bundle for each pallet of clay bricks. (*K)

*Please refer to the notes on page 34.

- Optimal cross section
- Weather resistant
- Flexible, easy to nail

Light clay block NF 1200

Lightweight molded clay brick, application class Ia, approved for infill of timber frame structures. The composition and manufacturing process make the Light clay block NF 1200 highly resistant to moisture and frost. The traditional standard format (NF) fits well in the hand and is ideal for infill panels. The Light clay block NF 1200 can be easily shaped and cut. The Light clay block, item no. 07.010, quality grade Q1, is particularly sharp-edged, dimensionally accurate, and even.

Recommended materials: Lightweight clay masonry mortar for laying, and coarse lime base coat plaster with hair reinforcement for rendering.

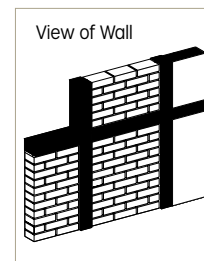
07.011 / 07.010



Item no.	Article description	Delivery form, product features
07.010	Light clay block NF 1200	DIN 18945, AK Ia, 416 pcs./EUR pallet, density 1200 kg/m ³ , brick 24.0x11.5x7.1 cm, Q1 (*L)
07.011	Light clay block S* (approx. NF) 1200	DIN 18945, AK Ia, 416 pcs./EUR pallet, density 1200 kg/m ³ , brick 25.2 x 11.9 x 7.0, Q2 (*L)

*Please refer to the notes on page 34.

S*: The clay block 07.011, Q2, may exhibit unusually high deviations in flatness and parallelism of its surfaces due to the manufacturing process. Claims or complaints cannot be derived from this.



- The timber-frame brick classic
- Optimal drying properties
- High moisture resistance

Lightweight clay masonry mortar

Masonry mortar for lightweight clay bricks used for timber-frame infills and interior shells. The wood-chip component allows adaptation to the material composition of the lightweight clay bricks, with the density and physical properties also being adjusted in this way. The bagged material (dry mortar) never expires.

Item no.	Article description	Delivery form, product features
05.022	LIGHTWEIGHT clay masonry mortar, NATURALLY MOIST 1.0t	DIN 18946, 1.0 t big bag, density 1400 kg/m ³ , 700L masonry mortar (*B)
05.222	LIGHTWEIGHT clay masonry mortar, NATURALLY MOIST SMALL	DIN 18946, 0.5 t big bag, density 1400 kg/m ³ , 350L masonry mortar (*B)
10.122	LIGHTWEIGHT clay masonry mortar, bagged goods	DIN 18946, 25 kg bag, 48/EUR pallet, density 1400 kg/m ³ , 20.5 L masonry mortar (*C)



- Mortar for lightweight clay bricks
- Structurally adapted
- For timber-frame masonry

*Please refer to the notes on page 34.

Oak stakes and clay timber struts

Sawn oak battens for lattices in infill sections or slatted ceilings and as a substructure for wattle. The traditional clay infilling techniques are applied for conservation purposes, and often they are also more practical than masonry, e.g. where there are very irregular sections or low beams. The oak wood is hard and resistant. Clay timber struts are ready-wrapped and pre-dried with straw clay. They are available in different lengths.



Item no.	Article description	Delivery form, product features
30.001	Oak stakes, SHARP-EDGED	D=26 mm, B=60 mm, L=4 m and shorter (*K)
30.002	Oak stakes, OBLIQUE-EDGED	D=26 mm, B=60 mm, L=4 m and shorter (*K)
30.003/ ..	Clay timber struts	Diameter of wrap-around jacket approx. 12-14 cm, 50 pcs./EUR pallet

- Historically authentic
- Stable and weather resistant
- As finished timber struts

*Please refer to the notes on page 34.

Willow rods

Split willow rods for wattle in timber-frame infills. The traditional clay infill techniques are used for historical building conservation and restoration. These are often not only more practical than masonry but also a lot of fun. The original way of working is creative and satisfying; the timber frame slowly becomes a house. The semi-circular cross-section makes the rods flexible and elastic.



Item no.	Article description	Delivery form, product features
31.001	Willow Rods	40 rod bundle, D up to 2.5 cm, L approx. 2.7 m, 3-4 m ² timber-frame area (measured over columns) (*3)

- Historically authentic
- Flexible and perfect for crafting

*Please refer to the notes on page 34.

Straw clay

Straw clay paste for restorations and renovations of infills and timber-frame ceiling filling. "Beaten clay" is the archetypal clay building material used for historical timber-frame construction. The straw clay mixture was generated with animal power and was worked in by the claysmith. The waterlogged earth mass is best prepared using a beating mixer and applied using a plastic trowel onto the wattle or lattice.



Item no.	Article description	Delivery form, product features
04.004	Clay straw, NATURALLY MOIST 1.0 t	1.0 t big bag, 700 L plastic clay straw (*B)

- Historically authentic
- Flexible and firm

*Please refer to the notes on page 34.

Stainless steel plaster mesh

Plaster lath for severely weathered timber-frame infill sections. Stainless steel mesh plaster lath is rust-free and specially formed. The recesses allow the necessary distance to be kept from the plaster base. It is held in place using facade fixing screws. With unusually weathered and exposed timber-frame constructions, it offers additional security for ensuring that lime render stays attached.



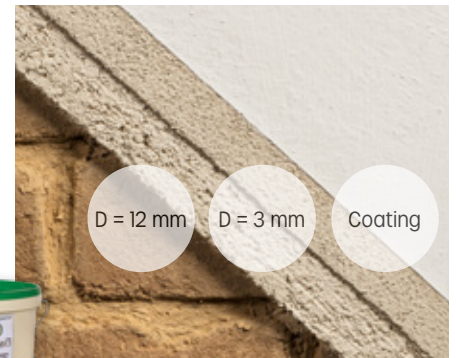
Item no.	Article description	Delivery form, product features
35.100	Special clay base mesh od stainless steel roll B=1m	16 mm mesh, L=5 m, 5 m ² , formed (*N)
35.110	Facade screws of stainless steel, Box of 100 pcs.	D=5.5 mm, L=65 mm, 15-20 pcs./m ²

- Plaster lath on highly stressed timber-frame infills
- Rust-free stainless steel
- Specially formed

*Please refer to the notes on page 34.

Lime renders and coatings (exteriors)

Gräfix plasters are cement-free breathable lime mortars for conserving and restoring historical buildings. They are ideal for ClayTec clay substrates. **Coarse lime basecoat render with hair** is coarse-grained and contains badger hair. It is applied directly on clay infill panels in timber-frame constructions. **Fine lime thin-coat render** is a topcoat render for use on lime (outdoors) or clay (in-doors). **Lime paint** serves as weather protection for exterior lime rendering, and it is also suitable for interior clay plasters. For other lime products, see the product sheet.



Item no.	Article description	Delivery form, product features
21.200	gräfix 61 lime basecoat render HAIR COARSE	30 kg bag, 40/EUR pallet, sand 0-4 mm 23 L clay mortar, 1,53 m ² area at D=1.5 cm (*C)
21.350	gräfix 61 Lime thin coat render FINE	30 kg bag, 40/EUR pallet, sand 0-0.8 mm 24 L clay mortar, 8 m ² area at D=0,3 cm (*C)
21.525	gräfix 680 lime paint, 10 L bucket	32 buckets/EUR pallet, pasty liquid, approx. 22 m ² with 3 coats depending on substrate (*E)
21.300	gräfix 61 lime basecoat render (special additives)	30 kg bag, 40/EUR pallet, sand 0-1.6 mm 23 L clay mortar, 1,53 m ² area at D=1.5 cm (*C)
21.400	gräfix 66 K lime render smooth (special additives)	25 kg bag, 40/EUR pallet 24 L plaster mortar, 24 m ² area at D=0.1cm (*C)

- Traditional lime render mortar
- Pure and cement-free
- Suitable for clay construction

*Please refer to the notes on page 34.

Dry earth fill material

Dry, pourable fill material. **Dry earth ceiling fill material** consists of pure clay granules. **Dry clay wood fill material** consists of clay mixed with softwood chips.

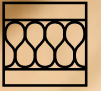


Item no.	Article description	Delivery form, product features
03.061	Dry earth fill material, big bag	1.0 t big bag, GRANULES, grain up to 0-25 mm, Grain group/oversized grains up to 40 mm, density approx. 1,350 kg/m ³ , provides approx. 0.75 m ³ of building material (*O)
03.070	Clay wood dry fill material LIGHT, big bag	300 kg big bag, clay and softwood chips, density approx. 275 kg/m ³ , provides approx. 1.0 m ³ building material (*R)

- Dry and pourable
- Heavy or light
- Coarse and fine-grained mixed composition

*Please refer to the notes on page 34.

Interior insulation



Reed boards

Construction panels made of wire-quilted reeds for interior walls and for the improvement of thermal insulation and the surface temperature of exterior walls. This traditional natural insulation product has been used for many years for simple interior insulation. Its properties and materiality are especially well suited for the conservation and restoration of historic buildings.



Item no.	Article description	Delivery form, product features
34.010	Reed lightweight construction boards, D=50 mm	25 boards/EUR pallet, 1x2m, 2 m ² /board (*S)
34.020	Reed lightweight construction boards, D=20 mm	50 boards/EUR pallet, 1x2m, 2 m ² /board (*S)

- Natural building material for interior insulation
- Strong and stable

*Please refer to the notes on page 34.

Clay adhesive and reinforcing mortar

Clay adhesive and reinforcing mortar for reinforcement layers on clayboards, wood fiber topboards and interior insulation panels. Clay adhesive and reinforcement mortar is made from clay and cellulose ingredients. This guarantees maximum workability, even when it is applied thinly. With a compressive strength of 3.9 MPa that sets new standards for clay mortar, and an adhesive strength of 0.85 MPa, clay adhesive and reinforcing mortar guarantees the solidity of the entire structure. It serves as a substrate for ClayTec clay finishing plasters (fine) and YOSIMA clay design plaster. With good preparation it can also be applied using the ClayFix clay paint system and ClayTec clay paint ready-to-use.



Item no.	Article description	Delivery form, product features
13.555	Clay adhesive and reinforcing mortar, bagged goods	COMPRESSIVE STRENGTH 3.9N/mm ² , ADHESIVE STRENGTH 0.85N/mm ² , 25kg bag, 48/EUR pallet, 17L mortar, 5.7m ² area (*C)

- Powerful adhesion properties, pressure-resistant
- Supple
- Remains workable long after application

*Please refer to the notes on page 34.

Glass mesh 60

Surface reinforcement for clay adhesion and reinforcement mortar and all clay plasters. ClayTec Glass mesh 60 is a gauze made of glass fiber yarn/roving, enhanced with polymer finishing. It is tensile, very fine, and particularly easy to handle.



Item no.	Article description	Delivery form, product features
35.010	Glass mesh 60, roll B=1m, L=100m	approx. 60g/m ² , 5.5mm mesh, L=100m, 100m ² (*20)
35.013	Glass mesh 60, roll B=1m, L=35m	approx. 60g/m ² , 5.5mm mesh, L=35m, 35m ² (*20)

- Glas: Sturdy standard product

*Please refer to the notes on page 34.

ClayTec HFD interior insulation board

Wood fiber insulation board for interior insulation of timber-frame houses and all other historical buildings. ClayTec HFD interior insulation boards are glued locally in a clay plaster levelling course or fixed with clay adhesive and reinforcing mortar. The soft boards decouple deformations in the construction from the interior plaster. They are inexpensive and suitable for many types of wall.



Item no.	Article description	Delivery form, product features
09.445	ClayTec HFD interior insulation board, D=40 mm	84 boards/disposable pallet (1.02x1.20 m), each board 0,38x1,20 m, covered area 0.43m ² /board, tongue-and-groove (*H)
09.465	ClayTec HFD interior insulation board, D=60 mm	57 boards/disposable pallet (1.02x1.20 m), each board 0.38x1.20 m, covered area 0.43m ² /board, tongue-and-groove (*H)
09.485	ClayTec HFD interior insulation board, D=80 mm	42 boards/disposable pallet (1.02x1.20 m), each board 0.38x1.20 m, covered area 0.43m ² /board, tongue-and-groove (*H)

*Please refer to the notes on page 34.

- Ecological interior insulation
- Ideal for masonry and timber-frame restoration
- Best moisture management, very breathable

Fixing medium

Item no.	Article description	Delivery form, product features
35.132/60-80	Screws L=60, 80 mm, box of 200 pcs	D=6 mm, 2 pcs/board (6 bis 8 pcs/m ²)
35.130/100-140	Screws L=100, 120, 140 mm, box of 100 pcs	D=6 mm, 2 pcs/board (6 bis 8 pcs/m ²)
35.140/100-160	Screw rawlplugs L=100, 120, 140, 160 mm, box of 100 pcs	D=8 mm, 2 pcs/board (6 bis 8 pcs/m ²)
35.150	Insulation plate, box of 100 pcs	D=60 mm, 2 pcs/board (6 bis 8 pcs/m ²)

Expanded clay

Light expanded clay is installed wet using a pourable (loose-fill) technique for interior facing shells, for example where the interior surfaces of external walls have significant projections and recesses or where service installations are to be integrated. The material dries relatively quickly and is non-combustible.



Item no.	Article description	Delivery form, product features
03.040	Expanded clay	1.0t big bag, grains of 4-16 mm, density approx. 700kg/m ³ , provides approx. 1.0m ³ wall building material (*U)

- Pourable installation technique for varying thicknesses
- Mineral-based
- Non-combustible

*Please refer to the notes on page 34.



Clay Bricks and Rammed Earth



ClayTec Clay thin-bed mortar
more on page 31

Heavy clay block NF 1850, load-bearing

Heavy molded clay block of application class II for clad, weather-protected exterior masonry and any type of interior masonry. The clay block heavy 1850 is an unperforated solid block. It is suitable for load-bearing clay masonry and complies with compressive strength class 2 according to DIN 18945. Its internal structural strength, shape accuracy and handy format make it particularly easy to lay. **As a mortar, ClayTec clay masonry mortar is suitable to use.**



Item no.	Article description	Delivery form, product features
07.018	Clay block S** (approx. NF) 1850, load-bearing	DIN 18945, AK II, load-bearing, 312 pcs/disposable pallet, density 1.850kg/m ³ , brick 24.8 x 11.5 x 7.1 cm (*L)

*Please refer to the notes on page 34.
 **Nominal dimension deviation 07.018 from the NF format according to DIN. Dimensions: L248, W115, H71

- For load-bearing masonry
- High structural strength
- Suitable for professional use

Clay blocks application class II, non-load-bearing

Heavyweight extruded clay blocks of application class II, for drywall construction and interior masonry. The clay block 1800 DF is a solid block. Because of its low weight, it is usually used for ceiling infills, supports and stacked layers in drywall construction work. Clay block 1800 NF is also used for masonry work. Clay masonry mortar is suitable as a mortar.



Item no.	Article description	Delivery form, product features
06.010	Clay block DF	DIN 18945, AK II, 448 pcs/disposable pallet, density 1.800 kg/m ³ brick 24.0 x 11.5 x 5.2 cm (*L)
06.012	Clay block NF	DIN 18945, AK II, 336 pcs/disposable pallet, density 1.800 kg/m ³ brick 24.0 x 11.5 x 7.1 cm (*L)

*Please refer to the notes on page 34.

- Affordable
- Clay storage mass
- Dry or as masonry

Clay masonry mortar

Masonry mortar for heavy clay blocks. The material has no organic additives and is approved for load-bearing brickwork. Because of its good pourability, clay masonry mortar is also used for ceiling infills.



Note: The packaging layout may vary.

Item no.	Article description	Delivery form, product features
05.020	Clay masonry mortar, 1.0t	DIN 18946, 1.0t big bag , 500L masonry mortar (*B)
05.220	Clay masonry mortar, SMALL	DIN 18946, 0.5t big bag, 250L masonry mortar (*B)
10.120	Clay masonry mortar, bagged goods	DIN 18946, 25kg bag 48/EUR pallet (*C)

*Please refer to the notes on page 34.

- Masonry mortar M2.5 according to DIN 18946
- For the production of load-bearing clay-block masonry
- For timber-frame masonry

Clay thin-bed mortar

ClayTec clay thin-bed mortar is an ecological adhesive for load-bearing clay masonry up to building class 5, brick masonry up to building class 4, and for non-load-bearing masonry of any kind. It offers the same performance as conventional fired binders while being environmentally friendly and gentle on the skin. Its water solubility allows for reversible bonding: clay bricks, sand-lime blocks, or lightweight concrete blocks can be dismantled and separated by material type at the end of the building's life cycle and reused. This makes these high-performance solid building materials part of a circular economy. ClayTec offers advanced system solutions for circular interior construction



Item no.	Article description	Delivery form, product features
10.150	Clay thin-bed mortar, bagged goods	25kg bag, 48/EUR pallet, 0.7L mortar/kg (*C)

*Please refer to the notes on page 34.

- For load-bearing and non-load-bearing walls
- For vertically perforated clay bricks
- For vertically perforated bricks
- For KS and lightweight concrete blocks

Rammed earth

Rammed earth ready mix for walls and floors. Rammed earth construction is clay construction in its archaic and pure form. The raw material is directly formed into a monolithic construction element. The main reason that this ancient construction technique was rediscovered was because of the aesthetic and expressive power of the heavy monolithic components and their surfaces. Natural fine rammed earth is for covering rammed earth floors. The finer grain makes it easier to produce a floor surface. The compacted material can then be oiled or fixed and finished with wax.



Item no.	Article description	Delivery form, product features
02.004	Natural rammed earth	1.0t big bag, grain 0-16 mm, provides approx. 0.45m ³ wall building material (*U)
02.008	Natural FINE rammed earth	1.0t big bag, grain 0-8 mm, provides approx. 0.45m ³ floor building material (*U)

- Original and pure clay construction
- Fascinating appearance
- For walls and floors

*Please refer to the notes on page 34.



02.004



02.008

Additional Products Notes



Additional products

Item no.	Article description	Delivery form, product features
13.405	Deep foundation and strengthener, 10L can	60 cans/EUR-Pal, liquid, for approx. 65 m ² /can depending on substrate (*E)
13.400	Deep foundation and strengthener, 1L bottle	6 bottles/carton, liquid, for approx. 6.5 m ² depending on substrate (*2)
35.006	Hessian mesh (jute yarn) reinforcement, roll B=10 cm	4.5mm mash, glazed, L=50 m
35.015	Glass mesh 60 reinforcement, roll B=8 cm	5.5mm mash, L=100 m
01.003	Building clay broken, NATURALLY MOIST	1.0 t-Big-Bag, grain up to 5 mm (*B)
01.002	Milled construction clay Dry in big bag	1.0 t-Big-Bag, grain up to 0.5 mm (*2I)
10.101	Milled construction clay, bagged goods	25 kg bag, 48/EUR-Pal, grain up to 0.5 mm (*C)

*Please refer to the notes.

Notes

A= 2, 22; B= 1, 20; C= 5, 23; D= 3, 7, 11, 22; E= 2, 20; F= 3, 7, 22; G= 7, 11, 20; H= 3, 7, 10, 11, 23; I= 3, 7, 11, 23; J= 3, 7, 10, 11; K= 3, 11; L= 4, 7, 23; M= 7, 23; N= 3, 20; O= 15, 21; P= 5, 15, 23; R= 3, 5, 21; S= 3, 5, 20; T= 1, 14, 16, 21; U= 1, 21

- 1 The product must be stored in a frost-free environment (to ensure workability). There is no risk of quality deterioration due to repeated freezing and thawing. Frost-free shipping with thermal covers is available upon request.
- 2 Store in a frost-free environment! Quality may be compromised by repeated freezing and thawing! Frost-free shipping with thermal covers available upon request (no crane unloading).
- 3 For these very lightweight products, the gross weight is equal to the chargeable weight due to their volume.
- 4 For orders of 12.0 t or more, please inquire about our special rates, as we ship directly from the manufacturer.
- 5 The unit price applies to full pallets! For partial pallets, we charge a surcharge of €0.48 per 25-kg bag and €0.55 per 30-kg bag, as well as €1.00 per square meter of reed mat.
- 6 All gross weights are exclusive of any pallet weights. Please also note Note 3.
- 8 Clay board screws = SPAX back panel screws, insulation board screws = SPAX galvanized screws, insulation board screw anchors = EJOT SDF-S plus 8 UB, insulation board washers = EJOT IT-Z 60/8 S
- 10 The m² used to calculate purchase and sales prices are determined based on the external dimensions, as is standard for N+F panels.
- 11 These items are not available for shipping.
- 12 10% volume discount for orders of 10 bags or more.
- 14 Use the product within 2 weeks.
- 15 Check the moisture content before installation, just to be safe.
- 16 This item is made to order and therefore cannot be canceled at short notice.
- 20 Pallets or big bags cannot be stacked.
- 21 A total of 2 big bags can be stacked securely with good load distribution and a Euro pallet placed between them.
- 22 A total of 2 pallets can be stacked, ensuring stability and good load distribution.
- 23 A total of 3 pallets can be stacked, ensuring stability and good load distribution.
- 24 Continuous mixer—suitable for applications where a pot life is not required (reinforcement layers).

Japanese Trowels



Japanese Trowels

In Japan, clay plaster has a centuries-old tradition. The surface design of the clay walls is of prime importance. The best evidence for the cultural significance of this craftsmanship is provided by the multitude of tools with which Japanese plasterers apply, smooth and craft the clay.

We offer an extensive selection of Japanese trowels and stucco tools. A special focus is our range of trowels for the professional crafting of edges, gorges and plaster finishes.

Item	Product	Length x breath mm
181/01210	Basecoat plaster trowl ARA-GOTE, L210	210×65-80
181/01240	Basecoat plaster trowl ARA-GOTE, L240	240×80-95
181/01300	Basecoat plaster trowl ARA-GOTE, L300	300×95-05
181/63180	Fine plaster trowel (ridged profile) SHIAGE-GOTE, L180	180×48-55
181/63240	Fine plaster trowel (ridged profile) SHIAGE-GOTE, L240	240×52-65
181/58180	Fine plaster trowel (flat profile) SHIAGE-GOTE, L180	180×50-58
181/58240	Fine plaster trowel (flat profile) SHIAGE-GOTE, L240	240×60-70
181/05210	Fine plaster trowel (NAMIKESHI, L210	210×45-55
181/61210	Fine plaster smoother (flat profile) KAKU-GOTE, L210	210×66-72
181/61240	Fine plaster smoother (flat profile) KAKU-GOTE, L240	240×75-82
181/61300	Fine plaster smoother (flat profile) KAKU-GOTE, L300	300×90-98
181/26406	Ridged trial round MENBIKI-GOTE UCHIMARO, R6	120×Ø 6
181/26415	Ridged trial round MENBIKI-GOTE UCHIMARO, R15	120×Ø 15
181/26430	Ridged trial round MENBIKI-GOTE UCHIMARO, R30	120×Ø 30
181/32406	Collared trowel round MENBIKI-GOTE SOTOMARU, R6	120×Ø 6
181/32415	Collared trowel round MENBIKI-GOTE SOTOMARU, R15	120×Ø 15
181/32430	Collared trowel round MENBIKI-GOTE SOTOMARU, R30	120×Ø 30
181/38406	Ridged trowel with bevel MENBIKI-GOTE UCHIMARU KAKUMEN, F6	120×bevel 6
181/38415	Ridged trowel with bevel MENBIKI-GOTE UCHIMARU KAKUMEN, F15	120×bevel 15
181/38430	Ridged trowel with bevel MENBIKI-GOTE UCHIMARU KAKUMEN, F30	120×bevel 30
181/40135	135°-trowel DORO MENBIKI-GOTE	120×135°, Ø 9
181/40090	90°-trowel KATA SODE MENBIKI-GOTE	120×90°, Ø 9
181/12075	Willow leaf trowel YANAGIBA-GOTE, L75	75×24-38
181/12120	Willow leaf trowel YANAGIBA-GOTE, L120	120×32-54
181/18103	Pointed trowl smooth, soft NAMITORI-GOTE, L90	90×14-21
181/98160	Plaster mortar board, right-handed	450×300, right-handed
181/98170	Plaster mortar board, left-handed	450×300, left-handed
181/98150	Trowel care set	Treatment oil and cotton cloth



Further information: ClayTec technical sheet for Japanese trowels and on claytec.de/en/product/japanese-towels/

Ranges, primers, plasters and coatings

Priming and coating areas in m², plastering areas depending on the application thickness in cm

Product	Delivery form	Application	Product	Delivery form	0,2	Filler	1x Coating	2x Coating
Deep foundation and strengthener	10 L canister	65	YOSIMA clay design plaster	500 kg big bag	150			
	1 L bottle	6.5		20 kg bucket	6.0			
Primer RED	10 L bucket	25		2 kg bag	0.6			
	5 L bucket	12.5	YOSIMA clay surfacer	5 kg bucket		6.5		
Primer YELLOW	10 L bucket	55		1.0 kg bag		1.3		
	5 L bucket	27.5	ClayFix clay paint	10 kg bucket			60	50
Primer WHITE	10 L bucket	60		1.5 kg bag			9.0	7.5
	5 L bucket	30	ClayTec clay paint	15 kg bucket				18
	1 L bucket	6	ClayTec clay roll plaster	15 kg bucket				15

Product	Delivery form	3	2	1.5	1	0.6	0.3	0.2	Application
Clay undercoat plaster with straw	1.0t big bag, earth moist	20.0	30.0	40.0	60.0				
	0.5t big bag, earth moist	10.0	15.0	20.0	30.0				
	1.0t-Big-Bag, trocken	20.8	31.3	41.7	62.5				
	25 kg bag	0.6	0.8	1.1	1.7				
Clay plaster Mineral 20	1.0t big bag, dry			36.0	54.0	90.0			
	1.0t big bag, earth moist			33.3	50.0	83.3			
	0.5t big bag, earth moist			16.7	25.0	41.7			
	25 kg bag			0.9	1.4	2.25			
Clay plaster SanReMo	0.8t big bag, dry				54.4	90.7	181.3		
	25 kg bag				1.7	2.8	5.7		
Clay topcoat plaster coarse with straw	1.0t big bag, earth moist				60.0	100.0			
	0.5t big bag, earth moist				30.0	50.0			
	1.0t big bag, dry				62.5	104.2			
	25 kg bag				1.7	2.8			
Clay color plaster coarse with straw	25 kg bag				1.6	2.7			
Clay topcoat fine 06	800kg big bag, dry						181.3	272.0	
	25 kg bag (06)						5.7	8.5	
Clay filling and smoothing putty	10kg bucket						2.5	3.8	

Material needs for bricks and mortar

Brick and mortar needs in piece numbers or pieces/litre l depending on wall thickness

Brick format	Dimensions in cm	11 ⁵	17 ⁵	24	36 ⁵
DF (thin format)	24.0×11.5×5.2	66 pieces/29L		132 pieces/70l	198 pieces/109l
NF (normal format)	24.0×11.5×7.1	50 pieces/27L		99 pieces/65L	148 pieces/101L
2DF (double thin format)	24.0×11.5×11.3	33 pieces/20L		66 pieces/50L	99 pieces/80L
3DF (triple thin format)	24.0×1.5×11.3		33 pieces/29 L	45 pieces/42 L	

We're here for you: Team International



Tobias Fleischmann

Head of International Sales

☎ +49 (0) 157 851 600 41

✉ t.fleischmann@claytec.com



Richard Heghmans

International Sales

☎ +49 (0) 2153 918-25

✉ r.heghmans@claytec.com

Worksheets

The Fine-finish surfaces worksheet provides detailed, practical, non-product-specific information on preparing backgrounds, surface design and working with YOSIMA clay designer plaster, clay surfacer and ClayFix coating materials.

The complete list of worksheet titles:

Fine-finish surfaces

Clay plasters

Timber-frame construction

Interior insulation

Ecological drywalls in system

Application video

The drywall construction videos show you the most important manoeuvres. See for yourself: clay drywall construction is easy to handle. Our YouTube channel provides further videos on working with YOSIMA clay design plaster and interior insulation.



Locations

Decentralizing production and utilizing regional clay deposits are key priorities for ClayTec. This applies to both technical and logistical aspects. For years, we have therefore been expanding not only at our original production site—the historic brickworks in Viersen, built in 1908 and designated a historic landmark—but also continuously expanding our regional network of branches and distribution centers:

- Administration
41751 Viersen-Boisheim, Niederrhein,
Note: No consultation or sales
- Branch Office and Distribution Center
41747 Viersen, Niederrhein
- Branch Office and Distribution Center
39435 Egel, Magdeburger Börde
- Branch Office and Distribution Center
56235 Ransbach-Baumbach, Westerwald
- Branch Office and Distribution Center
89431 Bächingen an der Brenz, Schwaben
- Distribution Center
29227 Celle, Lüneburger Heide
- Pickup location
34630 Gilserberg „Ziegelei Gumbel“, Nordhessen
- Pickup location
91486 Uehlfeld, Franken
- Pickup location
33415 Verl „Spedition Pähler“, Westfälische Bucht

Photo Directory

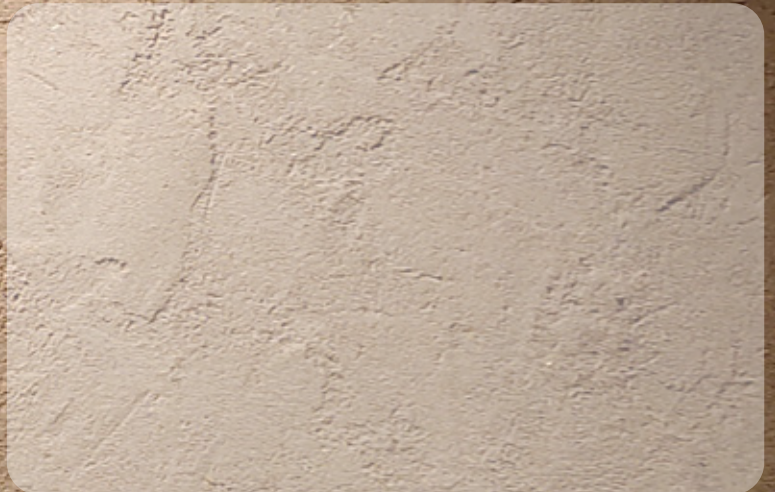
Title: Julian Beekmann, Heidelberg
(Object: Traube Tonbach, Baiersbronn)
S. 2,3: Viola Epler Fotografie
(Object: Landgut Eifel)
S. 5: ClayTec (Object: Kreisarchiv Viersen)
S. 9: Hertha Hurnaus (Objekt: Auenweide)
S. 21: ClayTec (Object: Kötterhof)
S. 33: Patrick Möhrle u. Michael Welle
Architektur GmbH BDA (Object: Michelbach)
S. 39: ClayTec (Object: Ringofen Viersen)
All other illustrations: ClayTec

188



Clay at its best.

Your ClayTec dealer:



ClayTec GmbH & Co. KG

Nettetaler Straße 113-117
41751 Viersen-Boisheim

Phone: +49 (0)2153 918-0

Fax: +49 (0)2153 918-18

service@claytec.com
claytec.de

ClayTec Lehmbaustoffe GmbH

Stranach 6
A-9842 Mörttschach

Phone: +43 (0) 676 430 45 94

info@claytec.at
claytec.at